

October 8, 2025, Member Alert!



Open Enrollment Starts October 13!

Active/Non-Medicare Members

All active and Non-Medicare members will be automatically enrolled into the Standard PPO Plan (formerly the 70/30 Plan). If you would like to enroll in the Plus PPO Plan (formerly the 80/20 Plan) or if you would like to make a change to your dependents, you will need to **TAKE ACTION** during Open Enrollment.

As an active or Non-Medicare retiree, you continue to have **TWO PPO PLAN OPTIONS** to choose from:

- Standard PPO Plan (*formerly the 70/30 Plan*)
- Plus PPO Plan (*formerly the 80/20 Plan*)

The Standard PPO Plan remains premium free for eligible retirees.

There are several changes for 2026:

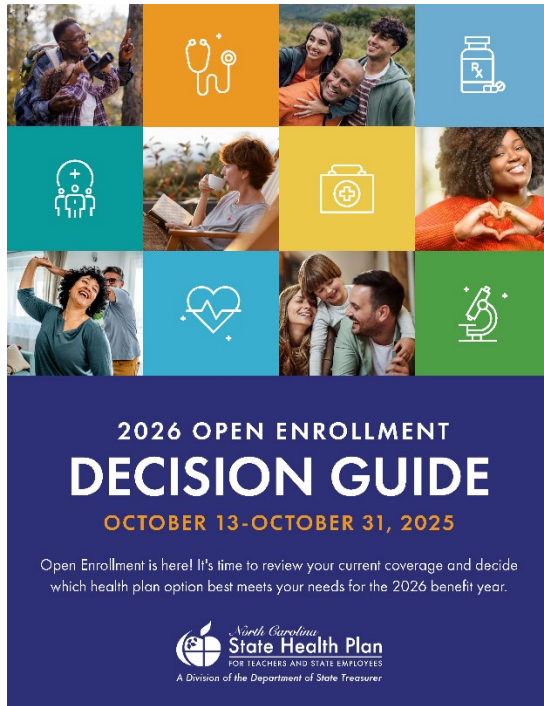
- There are increases to the deductible and copays on each plan.
- The Plan is introducing salary-based premiums for active members, which means your salary dictates your premium rate. When you log into eBenefits you will see your 2026 monthly premium rate. Your salary information was provided by your HR department or Best Shared Services (Fiori employees), which determines your salary band.
- **Salary-based premiums do not impact retirees.**

Monthly premiums for all members can be found on the Plan's website at www.shpnc.gov.

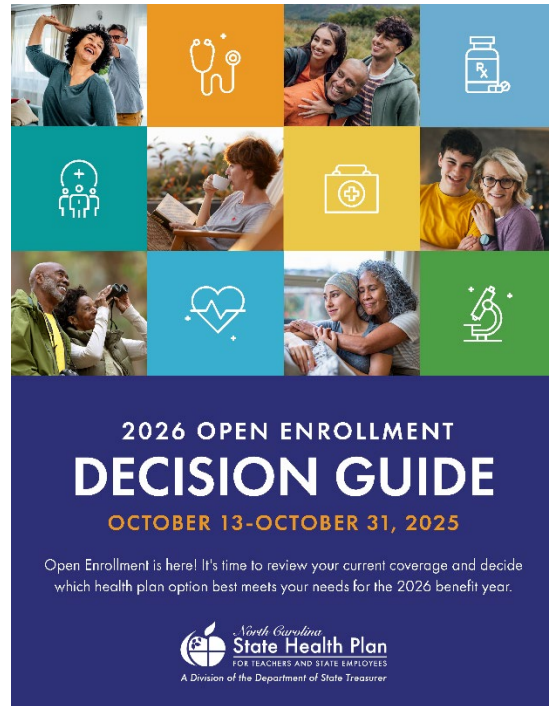
As a reminder, completing a tobacco attestation is **no longer** required to lower your monthly premium.

Decision Guides have been mailed and include all the information you need regarding your 2026 benefits. They are also [available online](#) or below by clicking on the image. You can also click below to view a brief video regarding Open Enrollment.

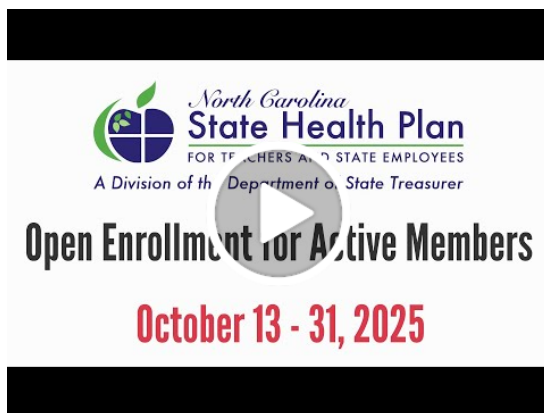
Active Decision Guide



Non-Medicare Decision Guide



OE Active Overview Video



Non-Medicare Overview Video



The State Health Plan is hosting several webinars to provide members an overview of your health plan options and to review the 2026 plan changes. For a complete list of events, [visit the Plan's website](#).

Medicare Members

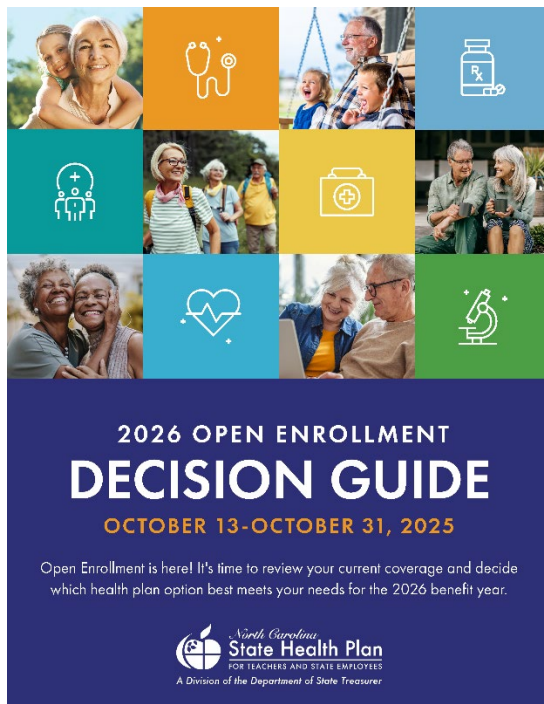
All Medicare-eligible members **WILL REMAIN** in the plan in which you are currently enrolled **UNLESS** you would like to enroll in a different plan during Open Enrollment. You need to **TAKE ACTION** during Open Enrollment if you want to be enrolled in a different plan or need to make any changes to your dependents.

As a Medicare-eligible member, you continue to have **THREE PLAN OPTIONS** to choose from:

- Humana Medicare Advantage PPO & Prescription Drug Base Plans
- Humana Medicare Advantage PPO & Prescription Drug Enhanced Plans
- The 70/30 Plan, Administered by Aetna

Decision Guides have been mailed and include all the information you need regarding your 2026 benefits. They are also [available online](#) or below by clicking on the image. You can also click below to view a brief video regarding Open Enrollment.

Medicare Decision Guide



Medicare Overview Video



**The Eligibility and Enrollment Support Center
is offering extended hours during Open Enrollment.**

**Monday-Friday: 8am-10pm; and Saturdays: 8am-5pm
855-859-0966**

The State Health Plan is hosting several webinars and in-person information sessions for Medicare members in October. These outreach events provide an overview of your health plan options. For a complete list of events and to register, visit [the Plan's website](#).



Connect with us on **facebook**



Follow us on *Instagram*



North Carolina
State Health Plan
FOR TEACHERS AND STATE EMPLOYEES

A Division of the Department of State Treasurer